

To Residents and Visitors

The domestic movement of Cucurbitaceae plants (vegetables and fruits) is restricted.

We are implementing emergency control measures based on the Plant Protection Act to prevent the spread of and quickly eradicate the pumpkin fruit fly, which causes damage to gourd family and other plants.

Due to the emergency control measures, the following plants cannot be taken from Ie-village, Izena-village, Iheya-village and the main island of Okinawa to outside Okinawa-prefecture or to the Outlying Islands within the prefecture.*

*Excluding Ie-village, Izena-village, Iheya-village and the Outlying Islands that belong to municipalities on the main island of Okinawa.

Examples of plants that are restricted from taking out of Ie-village, Izena-village, Iheya-village and the main island of Okinawa

[**Fresh fruits** and **flowers** of the following plants]

Vegetables

Gourd family (bitter melon, pumpkin, zucchini, loofah, watermelon, wax gourd, cucumber, melon, mouri, oriental picking melon, oriental sweet melon, calabash gourd, chayote, etc.), green beans, peppers, bell peppers, paprika, tomatoes, cherry tomatoes, pepinos, etc.

(Note) Okra, lettuce, and eggplant can be taken out.

Fruits

Passion fruit, papaya, guava, dragon fruit, jackfruit, rose apple, Malay rose apple, plum, sapodilla, noni, palmyra palm, Jamaican cherry, etc.

(Note) Mango, banana and pineapple can be taken out.

You may take out any product that has a "Movement Restriction Plant Inspection Certificate" attached to the outside of the box (see image on the right).



Please cooperate to prevent the spread of the pumpkin fruit fly



Jan. 1, 2026

Ministry of Agriculture, Forestry and Fisheries

Naha Plant Protection Office 098-868-1679

Naha Airport Branch Office 098-857-0054

Hirara branch office 0980-72-2433

Ishigaki branch office 0980-82-2312

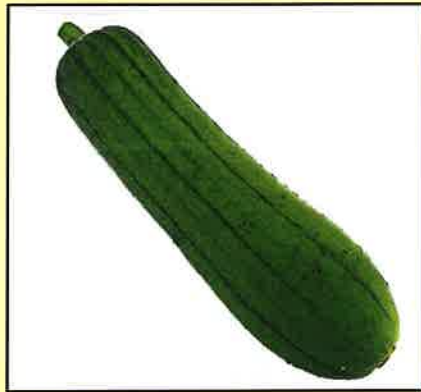


Official website

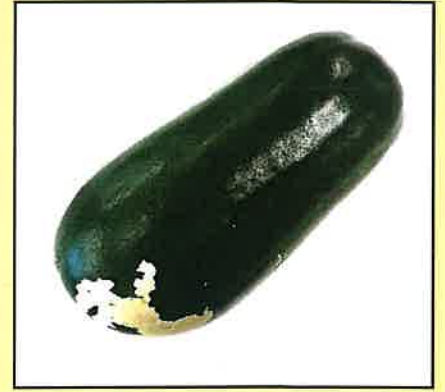
Plants that cannot be taken out of the main island of Okinawa



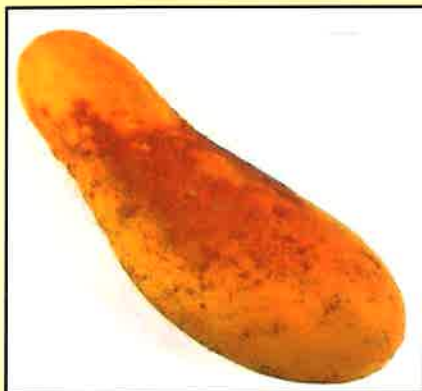
Bitter gourd



Loofah



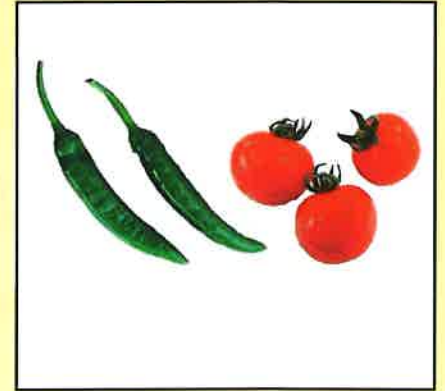
Wax gourd



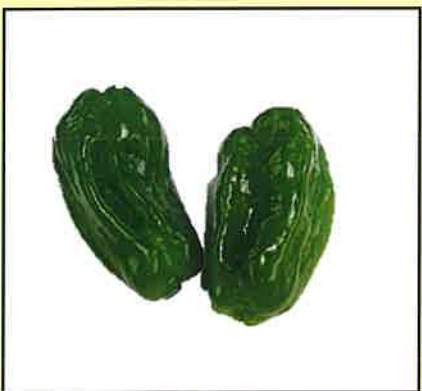
Mouji



Pumpkin



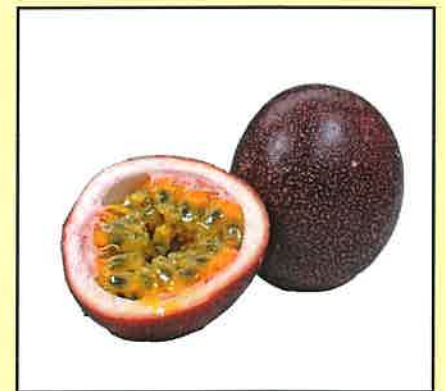
Pepper, Tomato



Bell pepper



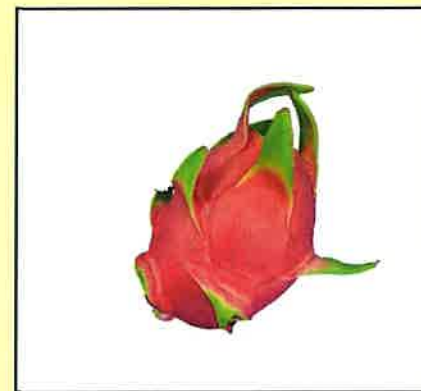
Green beans



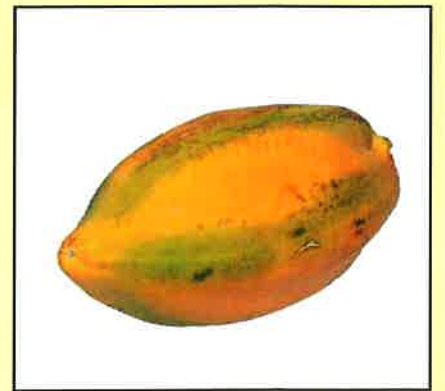
Passion fruit



Guava



Dragon fruit



Papaya

*The plants shown here are examples. For more information, please contact your nearest Plant Protection Station.