

Pumpkin fruit fly has been detected

Since March 2024, the pumpkin fruit fly has been found by surveillance traps in Okinawa Island. Because infestation of this species leads to prohibition against transportation of any host crops from Okinawa Island, we implement several control measures to eradicate it. Thank you for your understanding and cooperation.



Adult (8 ~ 9 mm)



Larva (7.5 ~ 9 mm)

Main host plants

Cucurbitaceae
fruit Bitter melon, Loofah,
Pumpkin, Melon,
Watermelon, Wax gourd,
Cucumber, and so on.



Control measures

1) Removal of host plants

*Home garden crops are also removed with owner's consent.



2) Spraying insecticides

*safe for human and animal health



3) Sterile Insect Technique

*releasing artificially sterilized pests to prevent reproduction of wild pests



*scheduled to begin in June 2025

4) Setting more traps and fiberboards

*with male-attractants and insecticides



How to distinguish from other fruit flies



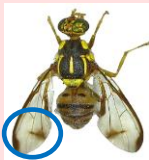
Pumpkin fruit fly

no black spots



Melon fly

black spots



Striped fruit fly

*Melon fly is already eradicated in Okinawa, but release of sterile insects is carried out as preventive control.

To prevent the proliferation of the pumpkin fruit fly

Request to All Home Gardeners



- ① Removing host crops left in your garden
*including wild cucurbit



- ② Disposing host crops by sealing in the thick plastic bags



- ③ Not taking (sending) crops outside your region



- ④ Not growing host crops in your home garden
(Infestation is frequently found in home garden)



- ⑤ If you find suspicious larvae in cucurbits, please contact us at the below E-mail address



Okinawa Prefectural Plant Protection Center

E-mail : xx044075@pref.okinawa.lg.jp

Website